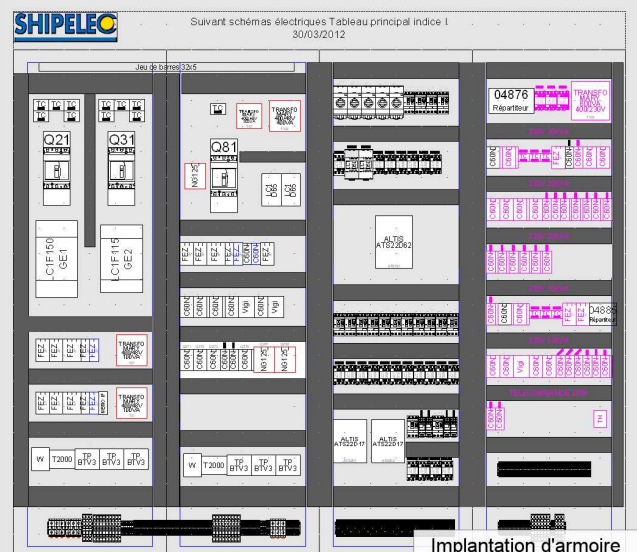
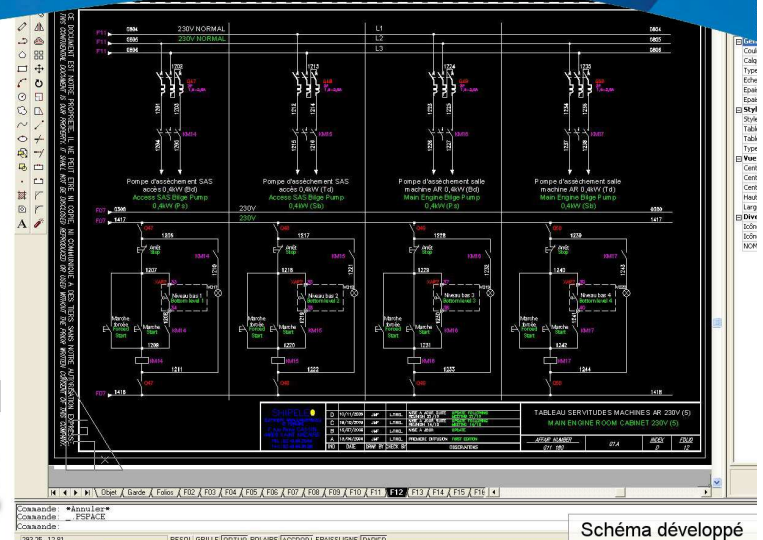
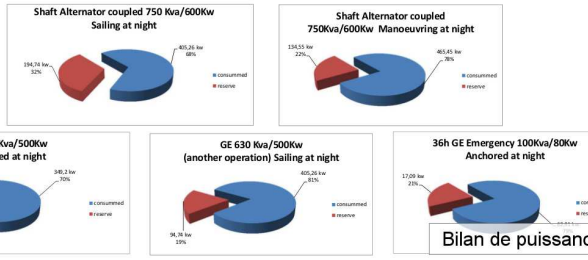
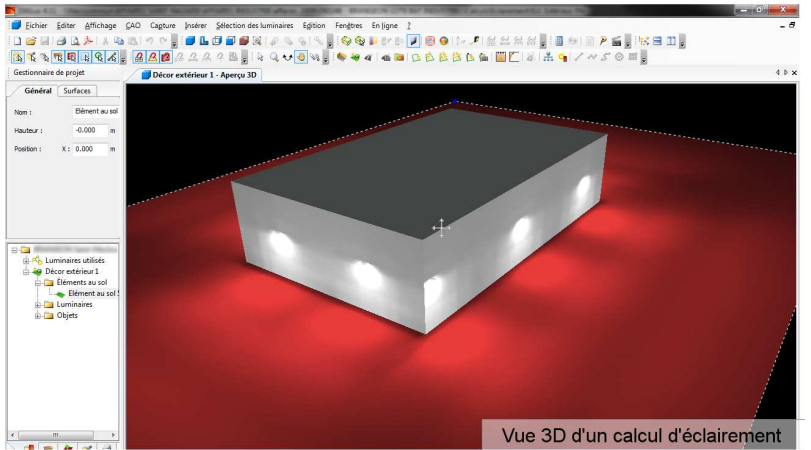
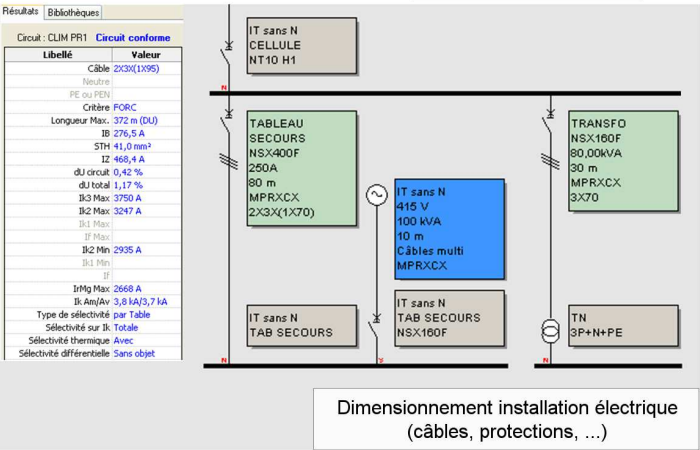
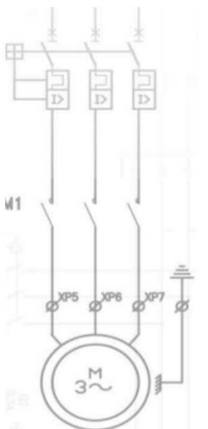


| Matr. | Operation | Quantite | Unité | 400 | 400.25 | 400.5 | 400.75 | 401 | 401.25 | 401.5 | 401.75 | 402 |
|-------|--|----------|-------|--------|--------|--------|--------|--------|--------|--------|--------|-----|
| M08 | Shaft Alternator coupled 750 kva/600kw | 1 | 600 | | | | | | | | | |
| M09 | Shaft Alternator coupled 750 kva/600kw low thrust | 1 | 600 | | | | | | | | | |
| M10 | GE 630 Kva/500kw | 1 | 500 | | | | | | | | | |
| M11 | GE 630 Kva/500kw (another operation) | 1 | 500 | 428.26 | 71.74 | 405.26 | 49.74 | 488.45 | 11.55 | 485.45 | 38.55 | |
| E08 | ESB supply by main switchboard | 1 | 80 | 27.72 | 52.28 | 30.32 | 49.68 | 27.72 | 52.28 | 30.32 | 49.68 | |
| E09 | ESB supply by Emergency Generator 100kva/80kw | 1 | 80 | | | | | | | | | |
| E10 | ESB supply by charger + charger inverter (UPS) - 5.76 kw | 1 | 5.76 | | | | | | | | | |
| E11 | Supply by charger + charger inverter (UPS) - 5.76 kw | 1 | 5.76 | | | | | | | | | |
| E12 | 24v 100mah | 1 | 48 | | | | | | | | | |
| E13 | 24v BATTERIES 1000Ah - 30mah | 1 | 48 | | | | | | | | | |



BE



Notre bureau d'études réalise :

- **Schémas :**
 - Développés
 - Unifilaires
 - Implantation
- **Dimensionnement :**
 - Câbles
 - Icc
 - Protections
 - ...
- **Bilan de puissance**
- **Dossiers pour organismes de contrôle**
- **Dossiers des Ouvrages Exécutés**

Le bureau d'études SHIPELEC a les compétences et les outils pour concrétiser vos projets.

NOS OUTILS

- > See Electrical
- > Autocad
- > Caneco
- > Dialux